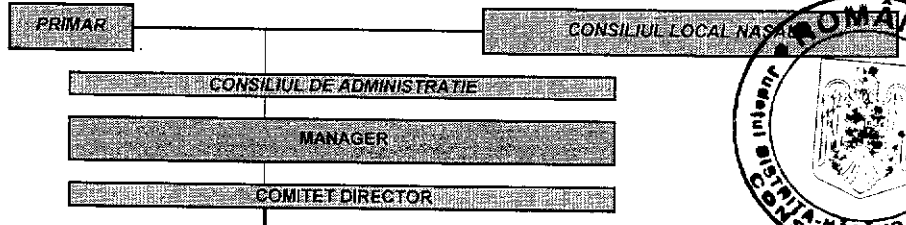
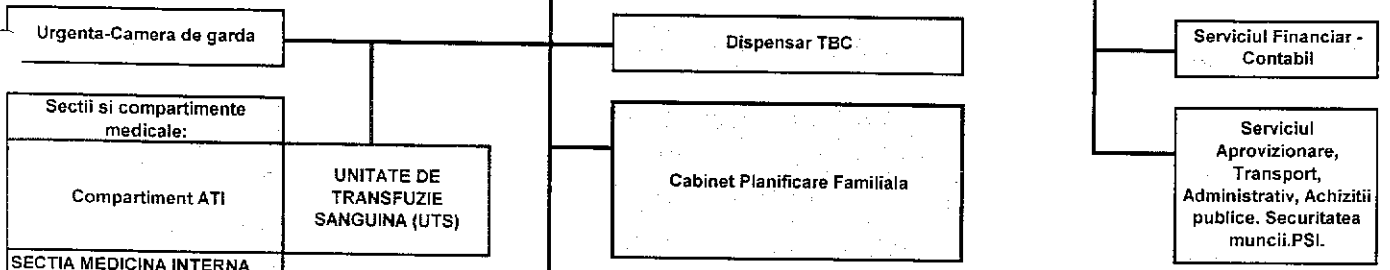
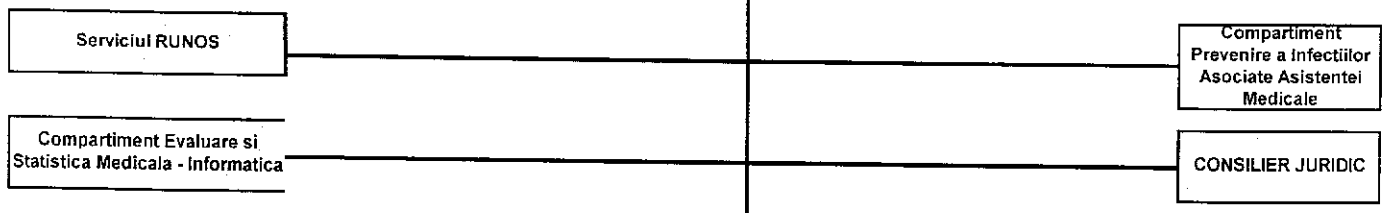


**ANEXA Nr. -**  
 La Hotărârea Consiliului Local al orașului  
 Năsăud nr. 121/22.10.2022  
 Pag. 1 - 19



BIROUL DE MANAGEMENT AL CALITATII  
 SERVICIILOR DE SANATATE



- SECTIA MEDICINA INTERNA din care:
- compartiment reumatologie cronici
  - Compartiment COVID
  - Compartiment Neurologie
- SECTIA CHIRURGIE GENERALA din care :
- compartiment ortopedie si traumatologie
- SECTIA OBSTETRICA-GINECOLOGIE
- Compartiment Neonatologie
- SECTIA PEDIATRIE
- Bloc operator
  - Sterilizare
  - Tria epidemiologic
- Laboratoare:
- \*Laborator analize medicale
  - \*Laborator Radiologie si Imagistica Medicala
  - \* Laborator Anatomie Patologica

Cabinet Diabet Zaharat Nutritie si Boli Metabolice

- Ambulatoriul integrat cu cabinete in specialitatile:
- medicina interna
  - chirurgie generala
  - cardiologie
  - obstetrica-ginecologie
  - neurologie
  - ORL
  - oftalmologie
  - recuperare, medicina fizica si balneologie
  - pediatrie
  - psihiatrie
  - reumatologie
  - ortopedie si traumatologie
  - dermatovenerologie
  - chirurgie si ortopedie infantila
  - pneumologie
  - gastroenterologie
  - endocrinologie
  - urologie
  - cabinet psihologie
  - Aparat functional

Farmacie